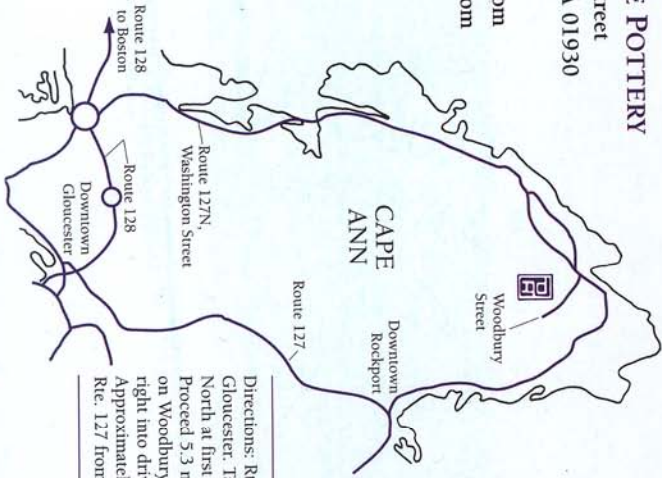


Photography by Lynn Swigart; Marcie Wasilewski
Brochure design by Karen Shea Design

email: davearch@cove.com
www.plumcovepottery.com

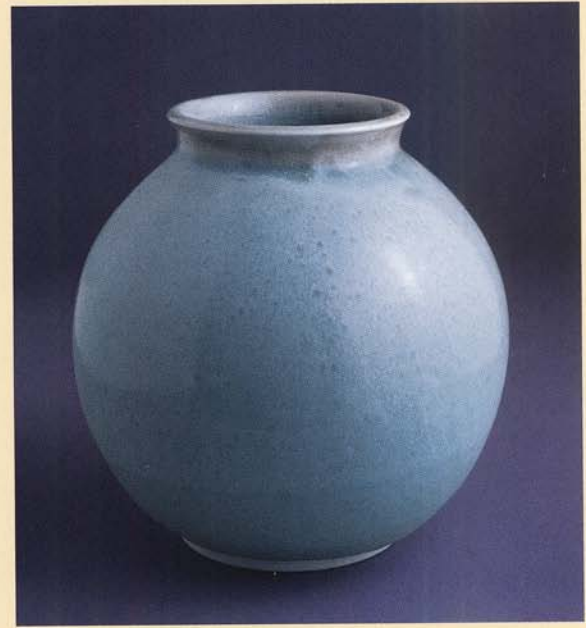
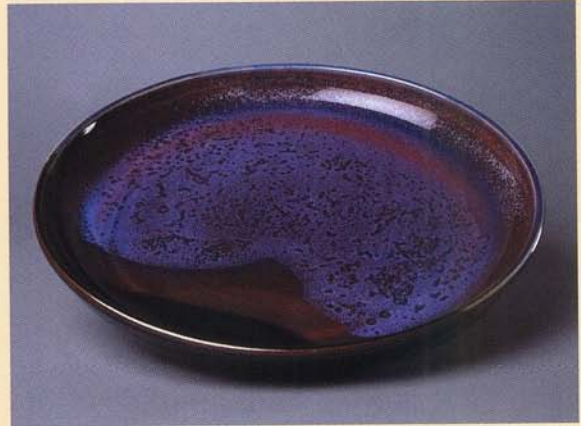


PLUM COVE POTTERY
9 Woodbury Street
Gloucester, MA 01930
978-283-5746



Directions: Rte. 128 North to Gloucester. Take Rte. 127 North at first traffic rotary. Proceed 5.3 miles, turn right on Woodbury Street, then turn right into driveway at #9. Approximately 3.5 miles on Rte. 127 from Rockport center.

PLUM COVE POTTERY

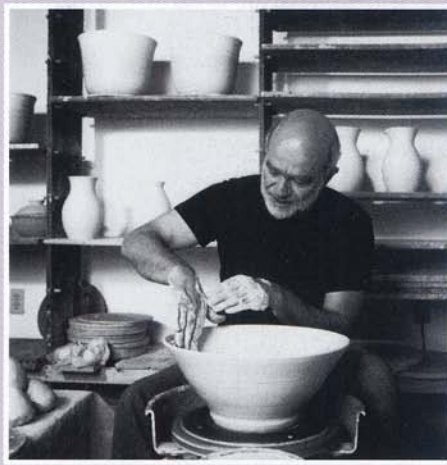
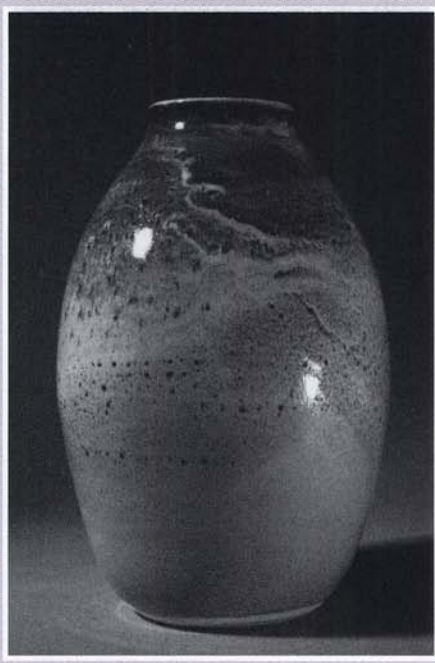


*Hand-Thrown
Porcelain and Stoneware
Pottery*

Set apart from the bustle of Cape Ann in a peaceful, wooded garden is Plum Cove Pottery. Here, David Archibald applies his unique touch to the craft he has been perfecting for more than four decades.

Mr. Archibald's hand-thrown porcelain and stoneware pieces are known for the deep, reflective quality of their finish. His pots emerge from the kiln in vibrant tones of purple and red, a result of combining copper with other metals in the high-temperature glazes. Mr. Archibald is also noted for his celadon glazes, which radiate softly in muted greens, grays and blues.

David Archibald's work is familiar to many hundreds of customers who have found him at craft fairs or visited his studio. Grace your home with his teapots, lamps, bowls, and vases. Dinnerware sets are a specialty. A piece from Plum Cove Pottery makes a thoughtful gift.



Mr. Archibald founded Plum Cove Pottery in 1973. In 1994 he moved the studio a short distance away to its current location near Folly Cove. Though only a block from Route 127 traffic, Plum Cove Pottery is a world away in atmosphere. The bountiful gardens outside the studio bloom from March to October, offering visitors a quiet reprieve from the weekend and summer crowds.

Off-street parking at the studio will accommodate several cars.

To determine when Plum Cove Pottery is open to visitors, please call (978) 283-5746.

